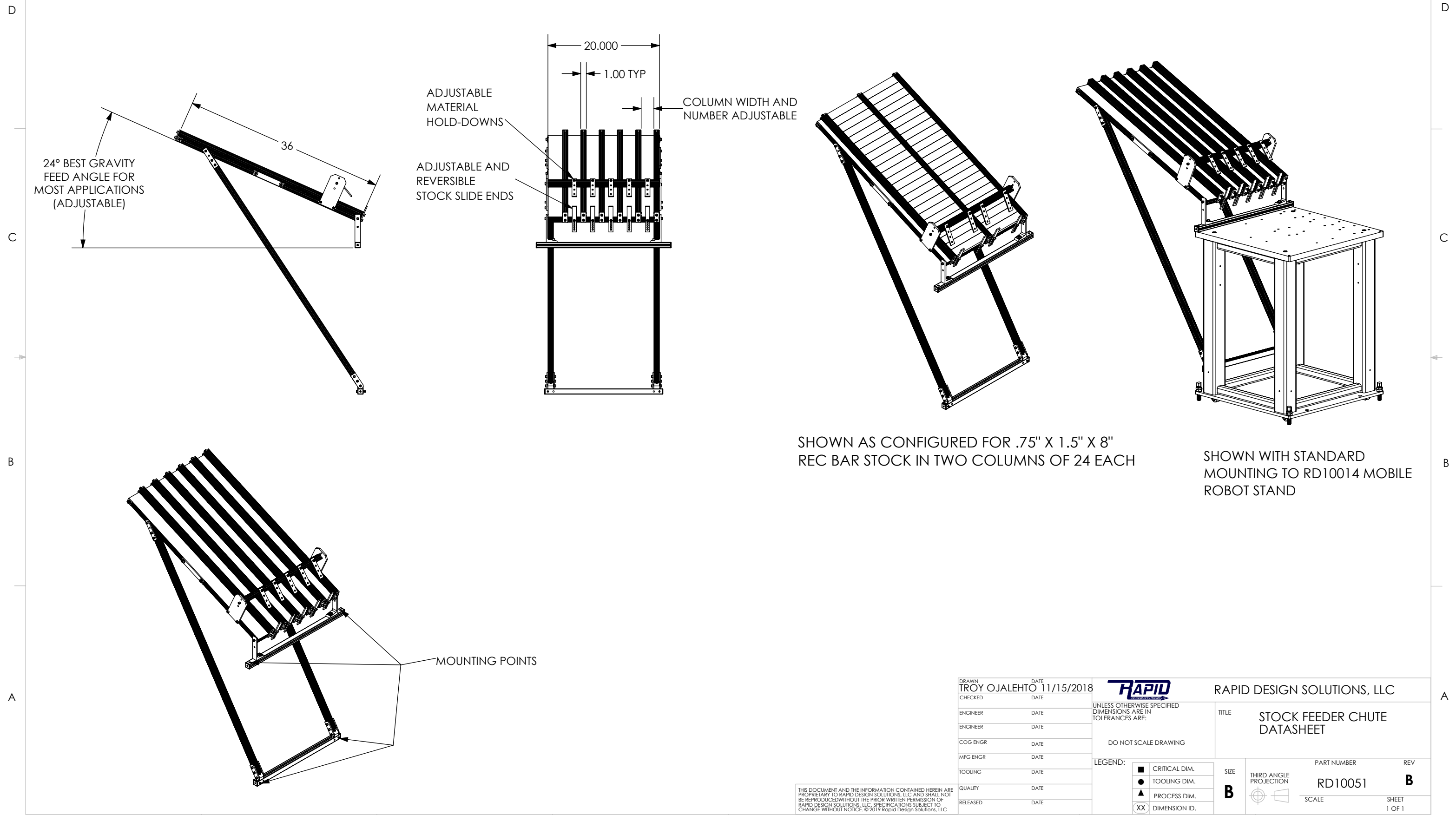


8 7 6 5 4 3 2 1

REV.	DESCRIPTION	DATE	APPROVED
A	RELEASE	11/15/2018	TO
B	MATERIAL UPDATE	7/1/2019	TO

- NOTES:
1. MATERIAL: ANODIZED ALUMINUM AND STAINLESS STEEL
 2. STOCK SHAPES ACCEPTED: ROUND OR RECTANGULAR
 3. STOCK SIZE ACCEPTED:
 - ADJUSTABLE FOR UP TO 17" LONG (WIDE) STOCK (W/ 1 COLUMN)
 - ADJUSTABLE FOR UP TO 4" TALL STOCK (STANDARD)
 4. COLUMNS: 1 TO 5 STANDARD, OPTIONS INCLUDE +1, +3, AND +4
ADDITIONAL COLUMNS
 5. STOCK SHOULD BE CLEAN AND BURR FREE FOR RELIABLE GRAVITY FEEDING



SHOWN AS CONFIGURED FOR .75" X 1.5" X 8" REC BAR STOCK IN TWO COLUMNS OF 24 EACH

SHOWN WITH STANDARD MOUNTING TO RD10014 MOBILE ROBOT STAND

DRAWN TROY OJALEHTO	DATE 11/15/2018		RAPID DESIGN SOLUTIONS, LLC	
CHECKED	DATE		TITLE STOCK FEEDER CHUTE DATASHEET	
ENGINEER	DATE	UNLESS OTHERWISE SPECIFIED DIMENSIONS ARE IN TOLERANCES ARE:		SIZE B
ENGINEER	DATE	DO NOT SCALE DRAWING		
COG ENGR	DATE	LEGEND:		PART NUMBER RD10051
MFG ENGR	DATE	■ CRITICAL DIM. ● TOOLING DIM. ▲ PROCESS DIM. XX DIMENSION ID.	THIRD ANGLE PROJECTION	
TOOLING	DATE	THIS DOCUMENT AND THE INFORMATION CONTAINED HEREIN ARE PROPRIETARY TO RAPID DESIGN SOLUTIONS, LLC AND SHALL NOT BE REPRODUCED WITHOUT THE PRIOR WRITTEN PERMISSION OF RAPID DESIGN SOLUTIONS, LLC. SPECIFICATIONS SUBJECT TO CHANGE WITHOUT NOTICE. © 2019 Rapid Design Solutions, LLC		SCALE SHEET 1 OF 1
QUALITY	DATE			REV B
RELEASED	DATE			